



Hinge for Chiller Door

107002



Hinge for Freezer Door

107003



Hinge for Thick Door

107006



Shutter KA5 IN1

112004



Vertical Shutter KA2 IN2

112005



Shutter KA6 AMP

112008



Shutter KA4 C1

112021



Heavy duty Shutter

112032



Double Leaf Door Lock

112040



Anti-panic Push Bar

117002



Shutter KA1F

117064



Rotating Shutter

121000



Inner Handle Light Duty

112012



Inner Handle Heavy Duty

112018



Inner Handle Lever

112030



Door Hook Stop A

116020



Door Wenge ⁵⁵/₆₄"

117033



Door Wenge ⁵/₈"

117034



Lock

117035



Lever Stop



117036



Insulating nut M10

117041



Plastic Washer diameter $3 \frac{35}{64}$ " for M10

117042



Door Arm Light Duty

117043



Door Arm Heavy Duty

117045



PVC Door Wenge Light Duty

117047



PVC Inner Lever Base

117048



Wheel Light Duty

117049



Wheel Heavy Duty

117050



Sliding Guide Cap
Light Duty A

117051



Side Guide Cap A

117052



Side Guide Cap B

117053



Door Hook Stop B

117055



Door Soft Stop

117056



Sliding Guide Cap
Heavy Duty A

117057



Sliding Cover Guide Cap
Light Duty B

117058



Inox Fixed Handle

117062



Side Guide with Wheel

117066



Side Guide without Wheel (old type)

117067



Side Guide Wheel

117101



Slider Light Duty

117102



insulating metallic bolt M10

117103



Sliding Guide Cap Heavy Duty B

117169



Plastic bolt M12 x 9 1/16"

118012



Plastic bolt M12 x 6 19/64"

118013



Plastic Washer diameter 2 23/64" for M10

118024



Screw with Spring

200001



Outer Lever Inox

200002



Inner Lever Inox

200003



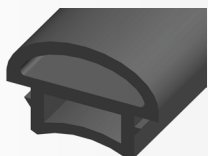
Special Seal for Hook Rail Passage for Meat Transfer

100222



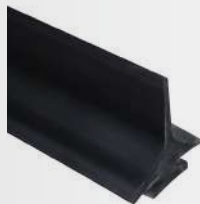
Guide for Cold Storage Door Seal ALU-PVC

111221



Office - Service Door - Clean Room Perimeter Seal

116010



Protective Seal for Swing Door from PU panel

116099



Heating Element with Thermostat

117007



Heating Element without Thermostat

117008



Frame Seal for Hinged Chiller Door YLA1

117014



Frame Seal for Sliding Chiller Door YLA3

117015



Frame Seal for Freezer Door YLA2

117016



Chiller Floor (Sweep) Seal YLA4

117017



Freezer Floor (Sweep) Seal YLA5

117018



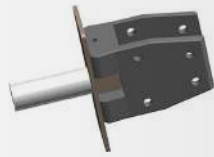
Perimeter Seal for Swing Polyethylene Door Porthole

117094



New Type Hinge

107004



Old Type Hinge

107015

OFFICE - SERVICE - CLEAN ROOM



Inox Handle

116007



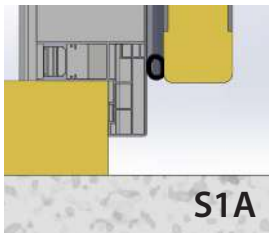
Inox Lock Trim

116031

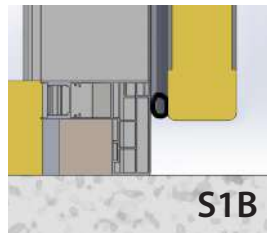


Inox Hinge

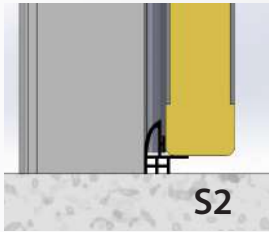
116017



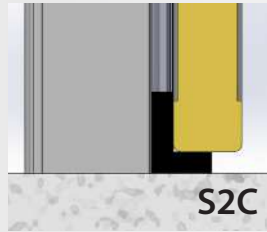
Lower Frame



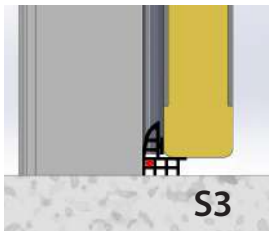
Lower Frame on floor



Sweep - Chiller



Sweep - Ctrl. Atm.
(gasket from neoprene)



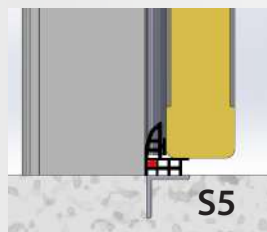
Sweep - Freezer



Sweep Support -Chiller



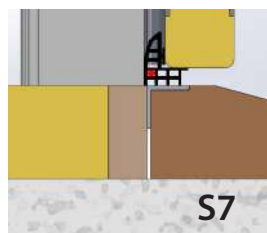
Sweep Support - Ctrl. Atm.
(gasket from neoprene)



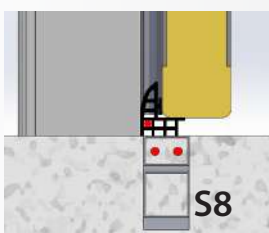
Sweep Support - Freezer



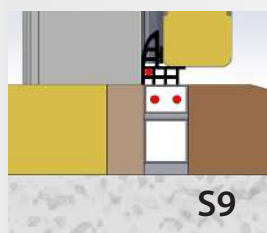
Sweep - Chiller with
anti-slip Entrance Ramp



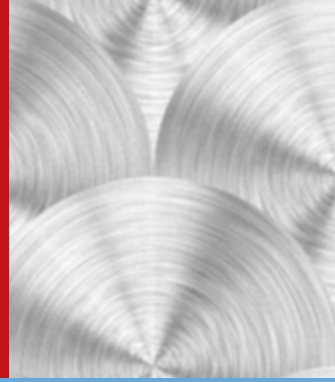
Sweep - Freezer with
anti-slip Entrance Ramp



Sweep - blast freezer
with Oil Heater



Sweep Ramp - Blast Freezer
with Oil Heater



Our products are constructed in our modern facilities in Kryoneri Industrial Area, Athens, in compliance with German DIN standards of Berlin Technical University & HACCP specifications.

A. MOTORS - CH. PILALIS S.A.

Protomagias 5, Industrial Zone Krioneri Attica 145 68, Greece
00 30 210 62 20 100 | info@ampdoor.com

8901 Belleforte Ave, Morton Grove, IL 60053, Illinois Chicago
00 1 (847) 630-7300 | info@ampdoor.com



www.ampdoor.com

